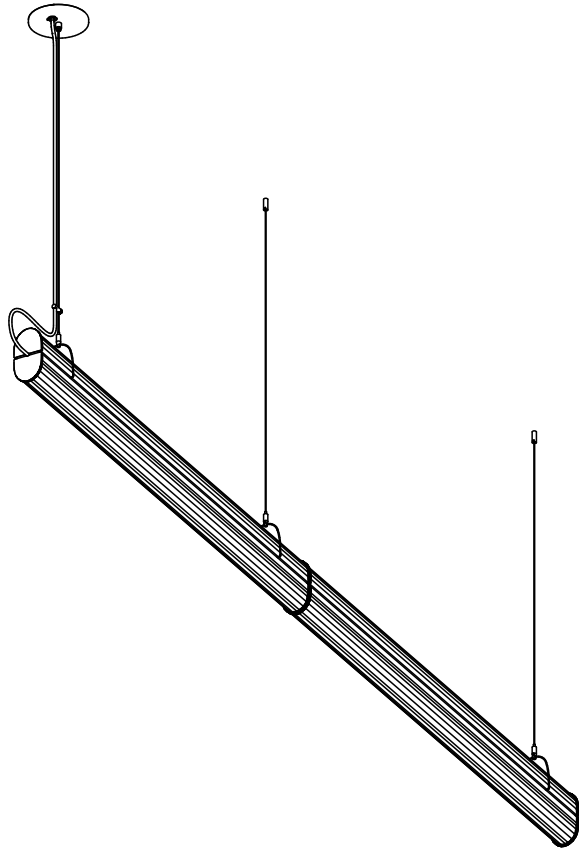




Queue Pendant 17173 rA

AC Input



CAUTION:

Before starting, turn off power at main circuit panel.

ADVERTENCIA:

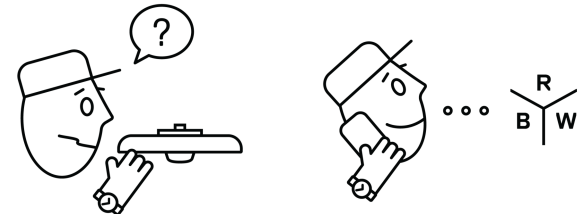
Antes de comenzar la instalación, apague la corriente en el tablero principal.

ATTENTION:

Coupez l'alimentation avant de proceder à l'installation.

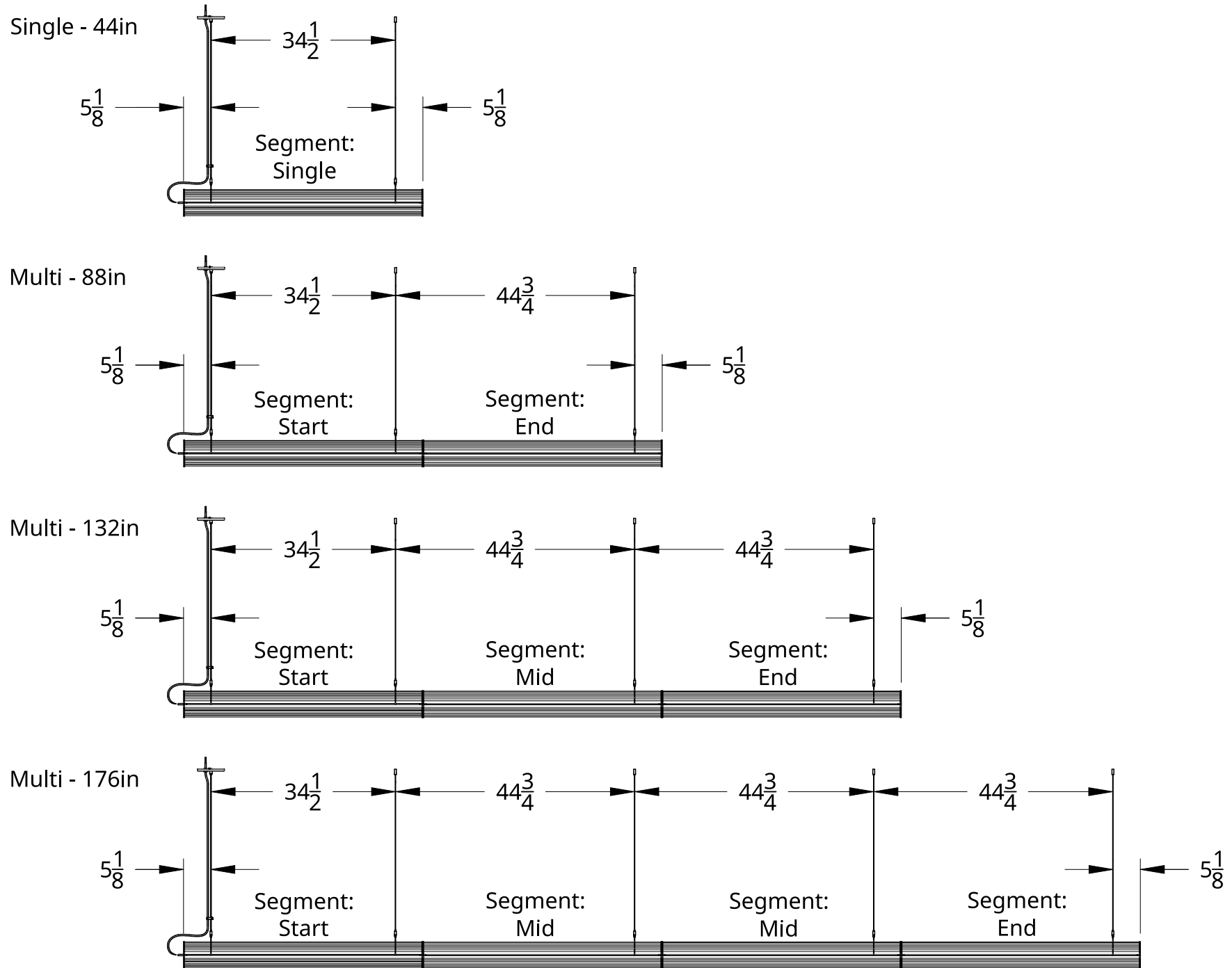


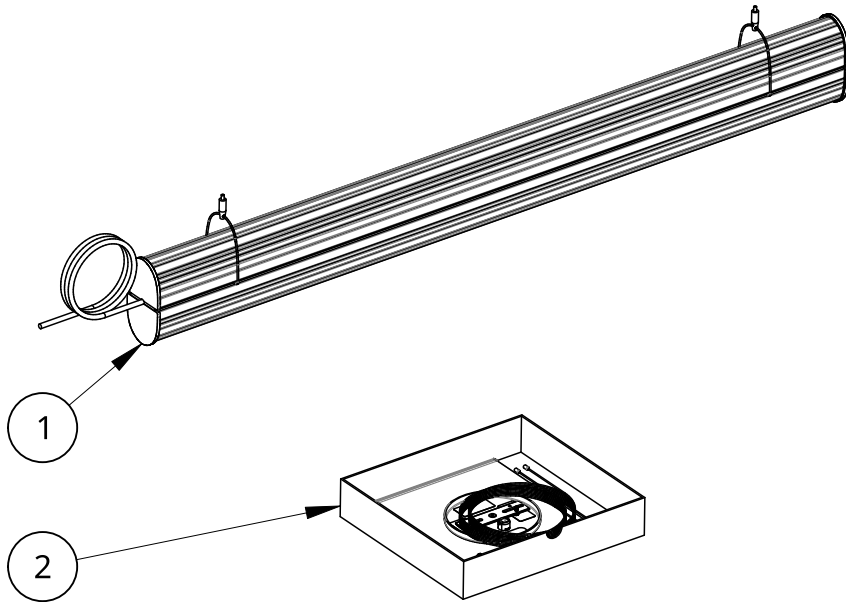
Calling for backup? Scan above to contact our team.



www.RBW.com
+1 212 388 0399
support@RBW.com
© 2023, RBW Studio LLC

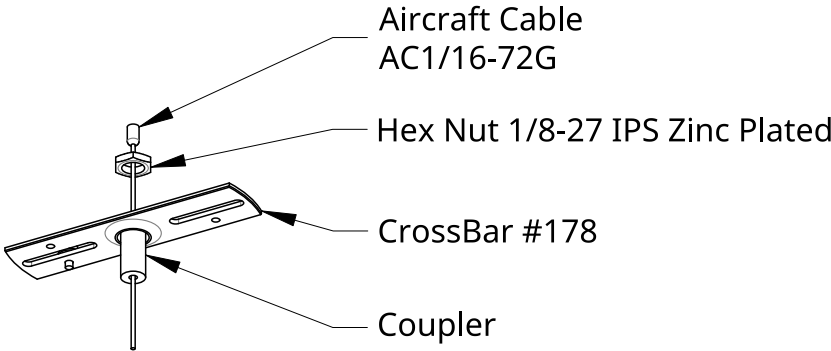
Queue Pendant - Suspension Points





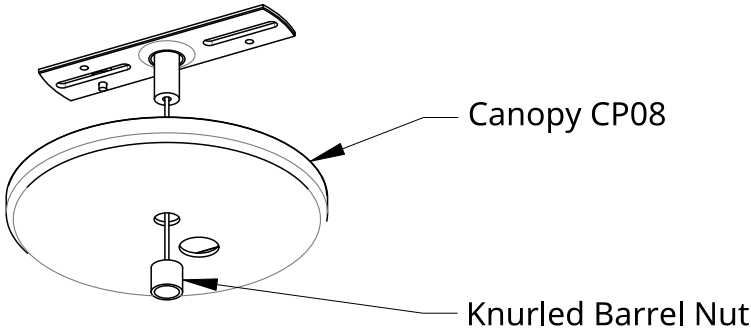
NOTE: Segment quantity, direction, CCT, and Finish may vary

Item	Qty	Description
1	1	Assembly: Queue Pendant. Single. Direct/Indirect.
2	1	Package: Queue Pendant Canopy Kit. Single.



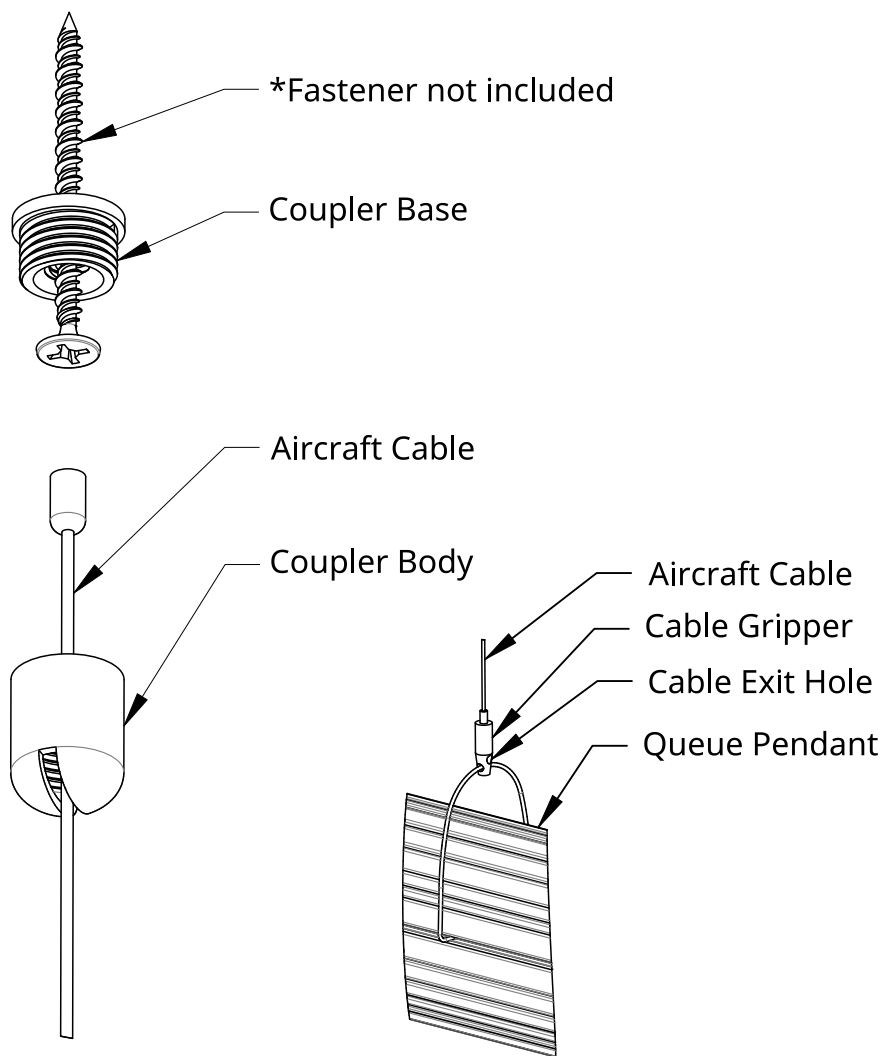
Installation - Crossbar

1. Thread Coupler into Crossbar.
2. Add Hex Nut and Cable.
3. Screw Crossbar into junction box.



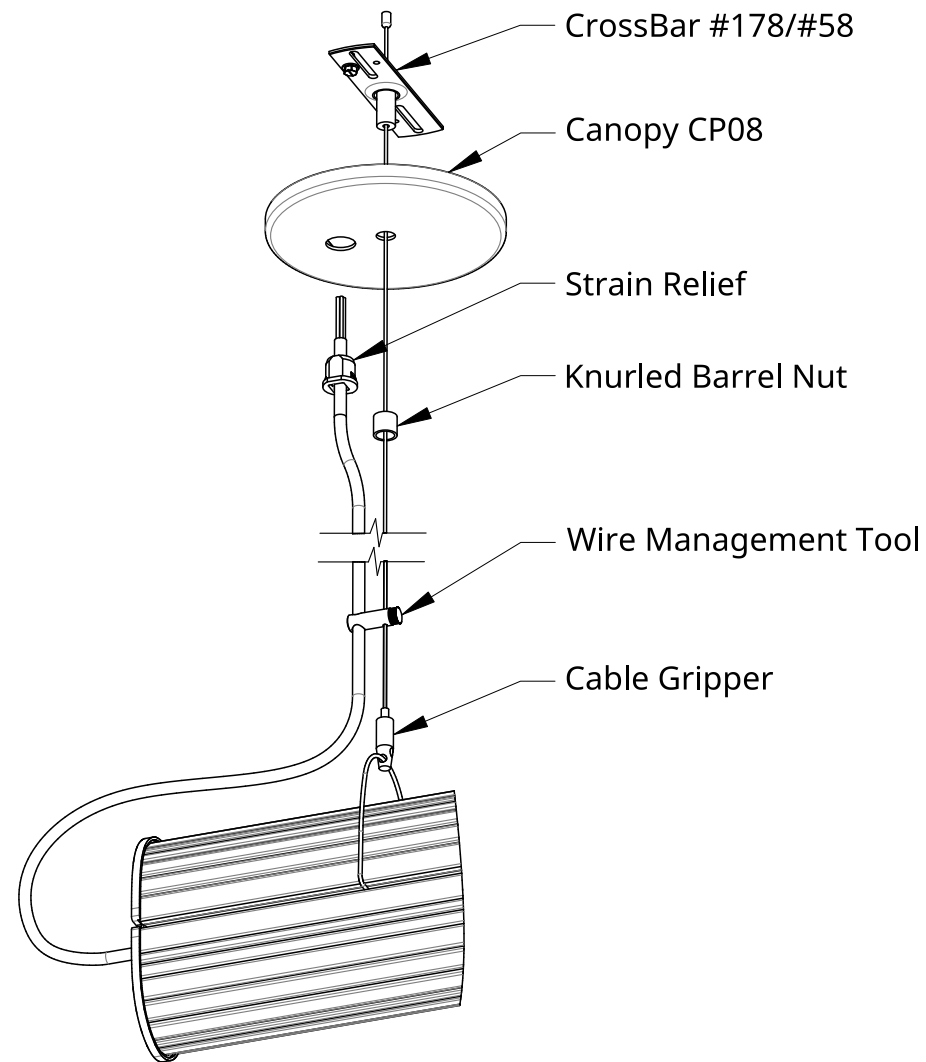
Installation - Canopy

4. Place Canopy on Coupler at ceiling.
5. Screw Knurled Barrel Nut onto Coupler to retain Canopy.
6. Do not trim cable at this time.



Installation - Ceiling Coupler

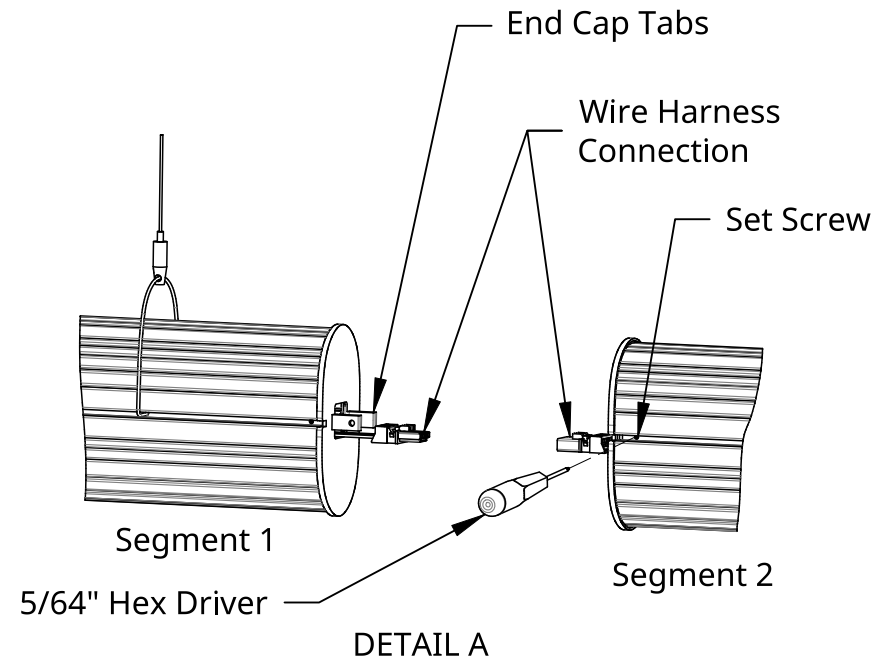
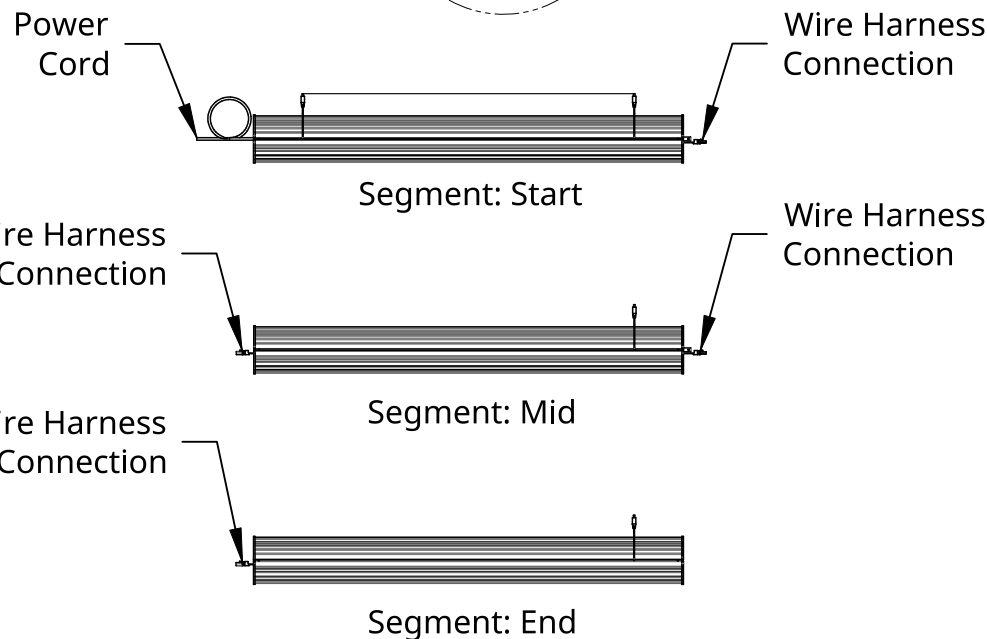
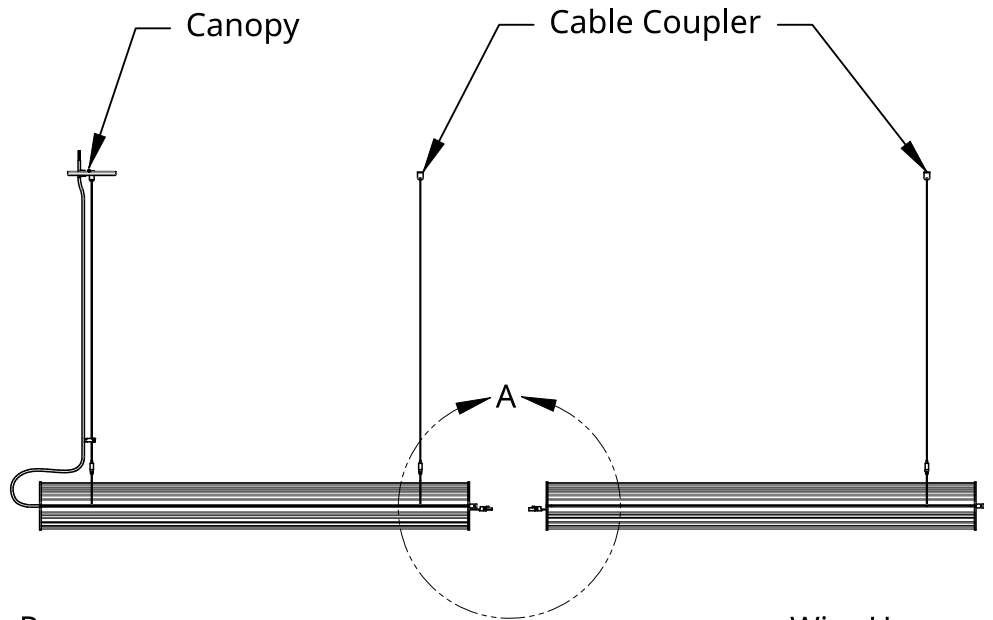
1. Use appropriate fastener to secure Coupler Base to desired mounting location.
2. Pass Aircraft Cable through Coupler Body.
3. Thread Coupler Body onto Coupler Base to secure Aircraft Cable in the Coupler.
4. Raise luminaire and feed Aircraft Cable into Cable Gripper.



Installation - Power Cord

1. Unthread Knurled Barrel Nut and lower Canopy.
2. Slide Wire Management Tool onto Aircraft Cable.
3. Pass cord thru Wire Management Tool.
4. Insert cord into Strain Relief and into Canopy.
5. Connect wires from cord to power.
6. Raise Canopy and Knurled Barrel Nut into place.
7. Check height and adjust to level.

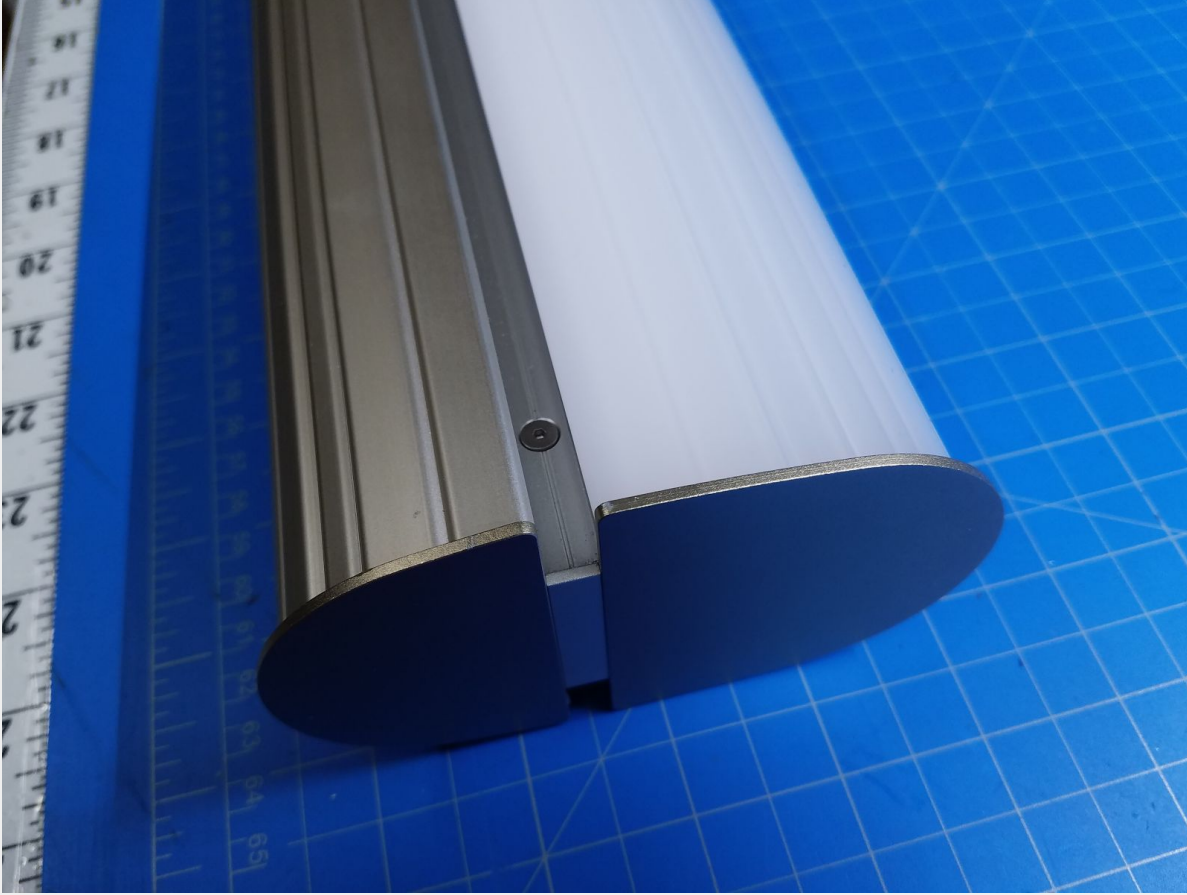
Multi-Segment Connections (If installing Single Pendant, skip to step 8)



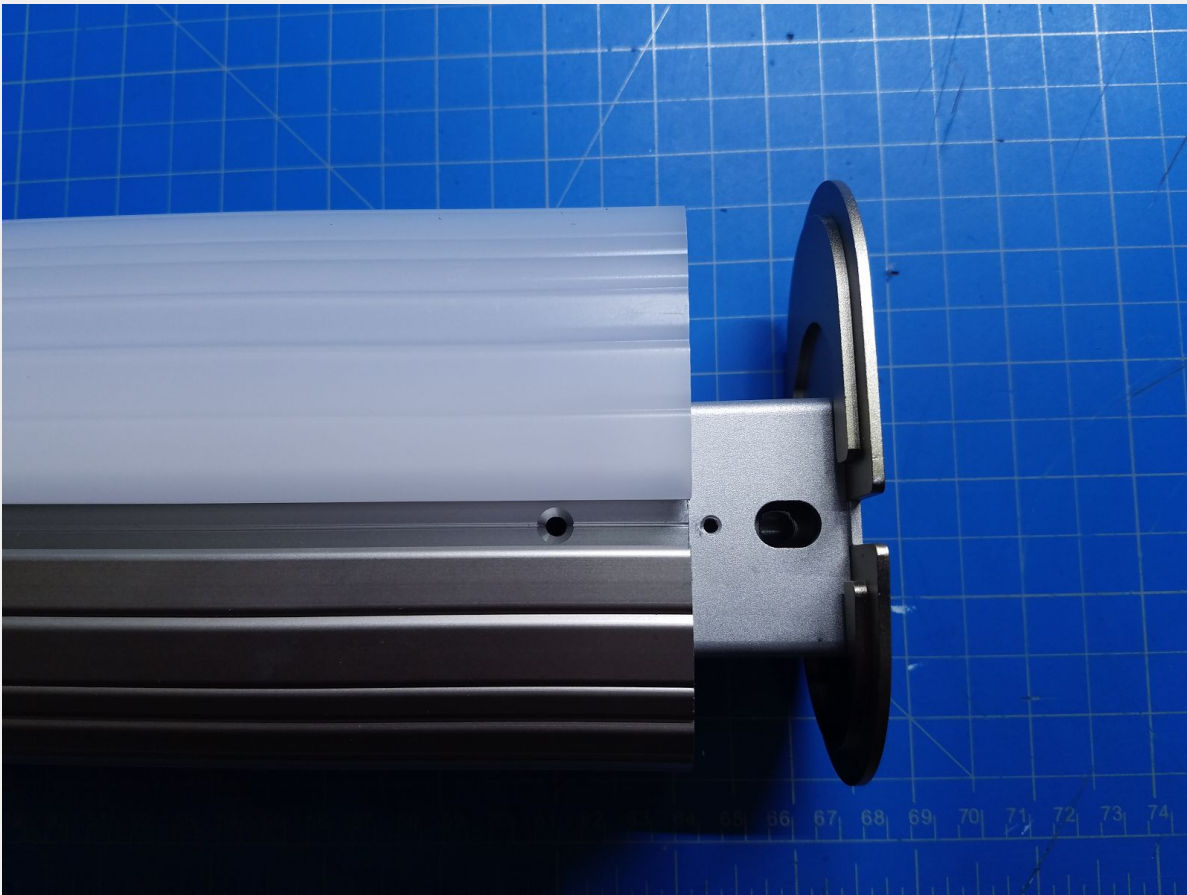
Installation - Connecting Queue Segments

1. Plug in wire harness from Segment 1 into Segment 2.
2. Tuck wire harness connection into Segment 1.
3. Temporarily remove set screws from left end of Segment 2.
4. Slide end cap tabs from Segment 1 into Segment 2.
5. Re-insert set screws into Segment 2, securing the two segments together.
6. Repeat steps 1-5 for any remaining segments.
7. Adjust hang cables until fixture is level.
8. Trim excess suspension cables, leaving 25mm(1") extending past the bottom of the cable gripper.
9. Congratulations! End of guide.

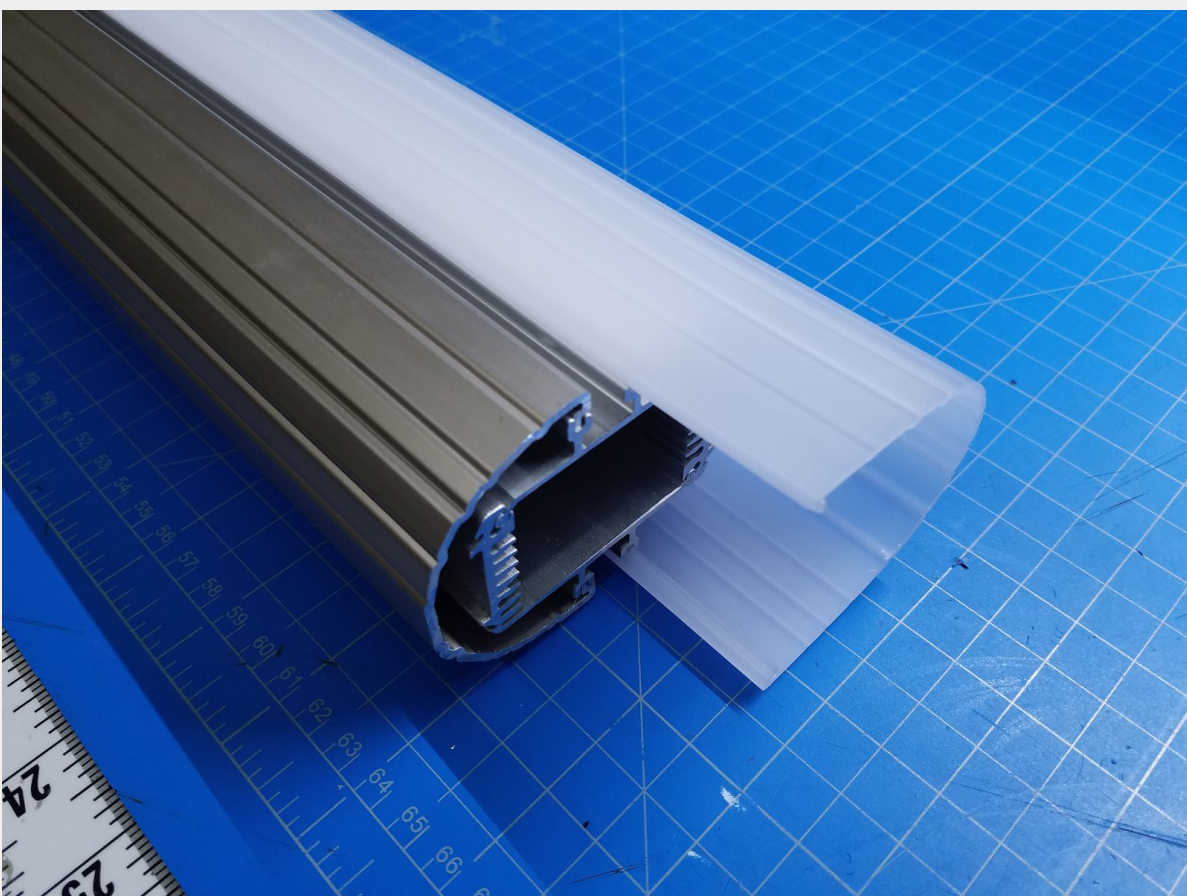
Queue Pendant Diffuser Replacement



Place the Queue section on a clean, soft surface to prevent scratching or scuffing.



Remove the two flat head 1.5mm hex screws to allow removal of the End Cap. There is one screw on each side.



Slide the Diffuser off of the Housing along its track.